

**STANDARD ARRIVAL  
CHART -  
INSTRUMENT  
(STAR)**

TRANSITION ALTITUDE  
**8000'**  
TRANSITION LEVEL  
**ATC**

RADAR APP S 124.50 TWR E 118.60  
E 124.50 W 118.10  
W 123.70 ATIS 126.20  
DIR 121.40 115.20  
ACC N 126.70 SMC 121.90

**JOHANNESBURG**  
(O.R. TAMBO INTERNATIONAL)  
**RNAV (GNSS) RWY 03R**  
AVAGO 1C

**ELEV, ALT & HGT IN FEET  
DIST IN NM**  
BRG ARE MAG  
VAR 18°W (2010)

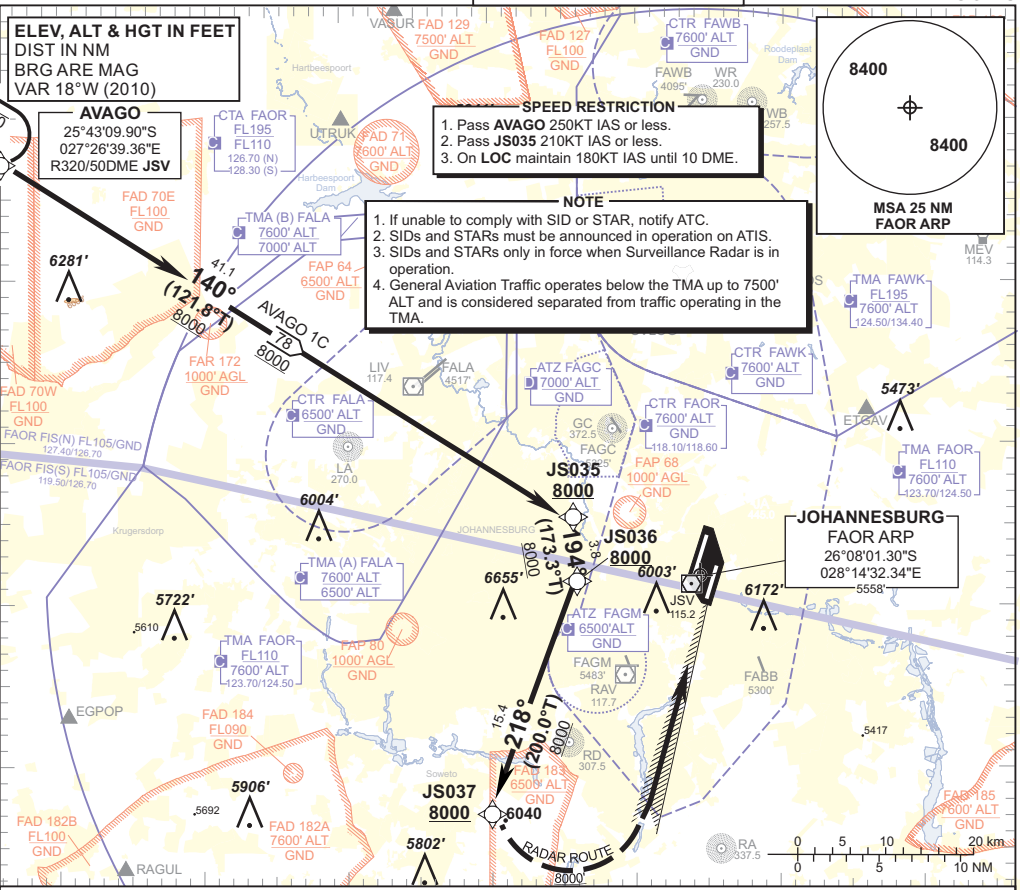
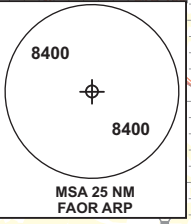
**AVAGO**  
25°43'09.90"S  
027°26'39.36"E  
R320/50DME JSV

**SPEED RESTRICTION**

1. Pass AVAGO 250KT IAS or less.
2. Pass JS035 210KT IAS or less.
3. On LOC maintain 180KT IAS until 10 DME.

**NOTE**

1. If unable to comply with SID or STAR, notify ATC.
2. SIDs and STARs must be announced in operation on ATIS.
3. SIDs and STARs only in force when Surveillance Radar is in operation.
4. General Aviation Traffic operates below the TMA up to 7500' ALT and is considered separated from traffic operating in the TMA.



**AVAGO 1C,  
RWY 03R**

Leave AVAGO for JS035. At JS035 turn right for JS036. At JS036 turn right proceeding to JS037 for radar vectoring onto ILS LOC RWY 03R.

**COMMUNICATION FAILURE PROCEDURE (Squawk 7600)**

**Before AVAGO:** Proceed to AVAGO and enter the AVAGO RNAV (GNSS) hold. Hold at last assigned level for minimum 5 MIN, then descend to FL130 in the hold or maintain last assigned level if below FL130. Leave AVAGO on the "After AVAGO" Communication Failure Procedure.

**After AVAGO:** Continue on the AVAGO 1C RNAV (GNSS) STAR. At JS035 descend to FL090, at JS037 descend to 8000'ALT. At JS037 proceed to VEKOP and continue with the RNAV (GNSS) RWY 03R to intercept the ILS LOC RWY 03R and land RWY 03R.

**Note:** Aircraft entering the TMA at FL110 and below are to enter the AVAGO RNAV (GNSS) hold at last assigned level and continue on the routing for the AVAGO 1C STAR.

**Caution:** Holding patterns below FL110 will be conducted partially outside of controlled airspace. Pilots to take note of the appropriate FADs, FAPs, FARs as well as the Magalies Glider Window (FL110 - FL145).

In the event of a missed approach with the intention of diverting to an alternate aerodrome, proceed as follows:

- To the North and North-West: Follow the routing for the VASUR 3A SID.
- To the North-East: Follow the routing for the EGMEN 2A SID (Jet ACFT) or EXOBI 1A SID (Turboprop ACFT).
- To the South-East: Follow the routing for the APDAK 3A SID.
- To the West and South-West: Follow the routing for the RAGUL 3A SID.

CHANGE: SPEED RESTRICTION BLOCK